

# METADOR



## Defender Modulex

# Steel doorsets for Modular buildings

Defender Modulex is designed to facilitate fitting flush into thin wall panels as used in the modular building industry.

E [sales@metador.com](mailto:sales@metador.com)

W [metador.com](http://metador.com)

T 01642 337119



# METADOR



**The Defender Modulex doorset has been designed for the modular building industry to provide an ultimate fast-fitting and cost-effective solution complete with a four-sided cloaking frame.**

The Defender Modulex doorset is manufactured from 1.5mm galvanised steel and internal steel strengthening as standard. Frames are 1.5mm galvanised steel and have 1.5mm stainless steel thresholds making the Defender Module a longer lasting, stronger door. The mineral wool core is also more thermally efficient than cardboard honeycomb infill versions.

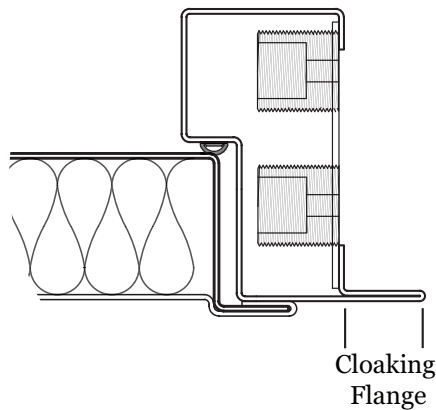
The unique flange frame design efficiently seals the frame to the building whilst concealing panel cut outs.

## Door Leaf

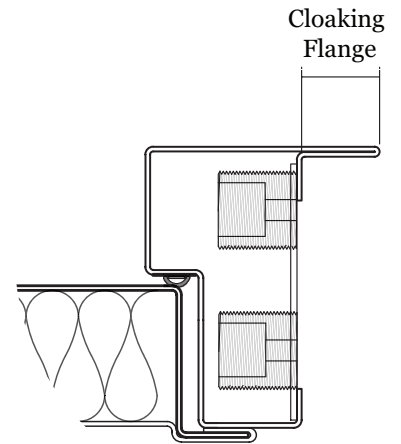
Manufactured from two 1.5mm Galvanised steel skins, folded and mechanically fixed to form a strong and rigid 45mm thick door leaf, filled with internal steel strengtheners and mineral wool for ultimate insulation. Anti-jemmy flanges to the leading edge of the leaf provide excellent jemmy resistance.

## Frame

90mm frames are pressed from 1.5mm galvanised steel to form a single rebated and an in-built cloaking profile. Profile headers form a smooth butt joint with the vertical posts and are joined together utilising strong M8 bolts to provide positive rigidity. The special fast fit frame is able to compensate for most irregularities in the opening with 16no threaded fixing adjusters per doorset. They permit a tolerance of up to 18mm on each side of the door. Shims and packers are not necessary making an extremely secure fix. Alternative frame depths are available on request to suit your specific wall panel construction.



Outward Opening



Inward Opening

## Hardware

Door leaves are hung from 4no stainless steel hinges for smooth operation and optimum weather resistance. Security dog bolts secure the leaf into the frame if the hinges are attacked. Additional hardware includes a range of locks, latches, lever handles, panic hardware, closers and door restrictors. On double doors, lever-action flush bolts can be installed within the leading edge of the inactive door leaf.

## Thresholds

DDA compliant 1.5mm stainless steel threshold bolted into the vertical frame posts. Available in inward or outward opening with full in-built cloaking to prevent water ingress into the floor of the building.

## Thermal performance

Tested and achieving an excellent rating of 2.2W/m<sup>2</sup>K based on a door size of 1090mm x 2090mm WxH - values may vary slightly depending on size and finished colour of doorset.

## Seal

For optimum weather, thermal and acoustic performance, a tubular silicone/ rubber is bonded into the frame rebate to ensure effective sealing of the door/ frame gap.

## Finish

Available in any standard RAL powder-coat finishes.

## Optional Extras

A full range of vision panels are available in various glass types and thicknesses. Louvre panels, closers and door restrictors and emergency exit panic ironmongery are available.

### Structural opening sizes (mm)\*

	Max width	Max height
Single leaf	1470	2970
Double leaf	2860	2970

\* Based on a 33mm wide frame. For oversized doors, please enquire.